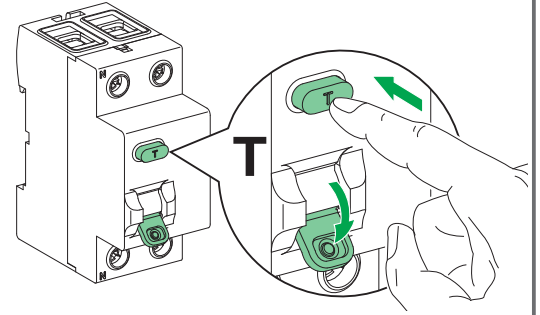




## 6 Test

1. A test for the effectiveness of the RCCB in the protected installation should be carried out, periodically, as detailed in applicable maintenance standards.
2. To test the operation of the RCCB after installation :
  - RCCB must be in ON position and energised,
  - press the test button on the front of the device,
  - the RCCB should trip immediately.
 Failure to do so indicates either no supply to the RCCB or a faulty device.



### NOTICE

#### HAZARD OF IMPROPER OPERATION

Do not use test button to switch OFF RCCB.

Failure to follow these instructions can result in equipment damage.

## 7 Technical characteristics

#### Main Characteristics

Tripping threshold ( $I_{\Delta n}$ )	30 mA, 100 mA, 300 mA	50% to 100% of $I_{\Delta n}$
Voltage rating ( $U_e$ )	2P	230 V~, 50/60 Hz
	4P	230/400 V~, 50/60 Hz

#### Additional Characteristics

Degree of protection: Device only	IP20
Electrical Endurance	2 000 cycles
Mechanical endurance	5 000 cycles
Operating temperature	-5°C...+40°C
Storage temperature	-40°C...+85°C
Constituent materials	RoHS 2003 compliant

Regd. Office : Schneider Electric India Pvt. Ltd.  
 Plot No B-12, Ground Floor, Rewari Line  
 Mayapuri Indl. Area, Phase 1, New Delhi 110 064  
 Customer Care Tel 1800 103 011  
 Email : [customercare.in@schneider-electric.com](mailto:customercare.in@schneider-electric.com)

**Schneider**  
 Electric