

# MT4N/MT4Y/MT4W Common Features

## Manual

- Visit our website ([www.autonics.com](http://www.autonics.com)) to download communication manual.
- Communication manual describes for RS485 communication (Modbus RTU protocol) and parameter address map data.

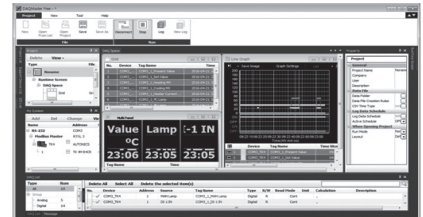
## Comprehensive Device Management Program (DAQMaster)

- DAQMaster is comprehensive device management program for convenient management of parameters and multiple device data monitoring.
- Visit our website ([www.autonics.com](http://www.autonics.com)) to download user manual and comprehensive device management program.

< Computer specification for using software >

Item	Minimum requirements
System	IBM PC compatible computer with Intel Pentium III or above
Operations	Microsoft Windows 98/NT/XP/Vista/7/8/10
Memory	256MB+
Hard disk	1GB+ of available hard disk space
VGA	Resolution: 1024×768 or higher
Others	RS-232 serial port (9-pin), USB port

< DAQMaster screen >



## Communication Output

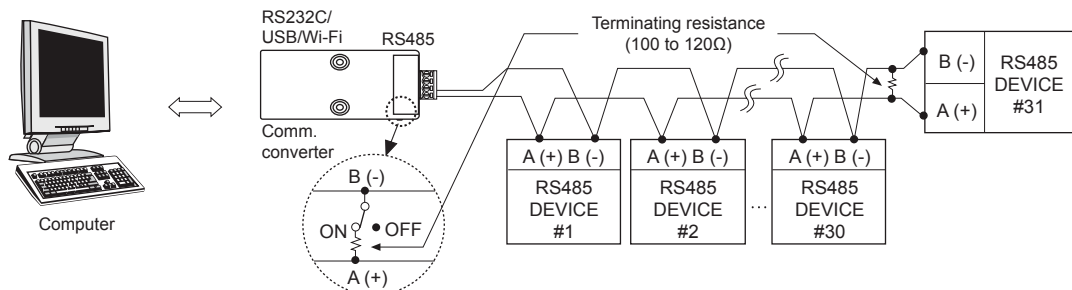
It is for parameter setting and monitoring via external devices (PC, PLC, etc.).

### Interface

Comm. protocol	Modbus RTU	Comm. distance	Max. 800m
Connection type	RS485	Comm. speed	1200, 2400, 4800, 9600 bps
Application standard	Compliance with EIA RS485	Start bit	1-bit (fixed)
Max. connection	31 units (address: 01 to 99)	Data bit	8-bit (fixed)
Synchronous method	Asynchronous	Parity bit	None, Even, Odd
Comm. method	Two-wire half duplex	Stop bit	1-bit, 2-bit

※ It is not allowed to set overlapping communication address at the same communication line.  
Use twisted pair wire for RS485 communication.

### Application of system organization



※ It is recommended to use Autonics communication converter; SCM-WF48 (Wi-Fi to RS485-USB wireless communication converter, sold separately), SCM-US48I (USB to RS485 converter, sold separately), SCM-38I (RS232C to RS485 converter, sold separately).

Please use twisted pair wire, which is suitable for RS485 communication, for SCM-WF48, SCM-US48I and SCM-38I.

## Cautions during Use

- 12-24VDC, 12-24VAC power supply should be insulated and limited voltage/current or Class 2, SELV power supply device.
- It is disable to modify Parameter (baud rate, address etc)related to communication of MT4 Series on line with upper systems such as PC, PLC etc. (error will occur)
- First make communication parameter of MT4 Series and master system one.